



***The Human Mind Plans the Way,
But The LORD Directs the Steps.***

Proverbs 16:9 NRSV

The plan seemed simple enough. Six portable buildings on our campus were not being used. Rather than let them remain vacant (or demolish them) why not do something really big--a Health & Wellness center where members from our community could receive medical, dental, and legal assistance, all right on the Beth-El campus.



The initial moving parts came together rather quickly. During the late spring of 2017

dental equipment was donated for a free clinic for those in our community living in poverty. Next came a large donation to redevelop the Health & Wellness campus. By mid-summer the first architectural drawings were complete and a new deck leading to the campus constructed. Then the delays began.



Throughout my life I have frequently quoted Proverbs 16:9 as a rule of life. This ancient proverb proved quite prophetic as months passed with little headway in the completion of the clinic. Still, we knew God had a plan, if only we could remain faithful.

After a chance meeting with Javier in October 2017, Michael Frandsen stepped in as our general contractor. His company, Interstruct, and his contractors, did much of the construction of the Dental Clinic at cost—offering their skills and talents as a donation to this worthy cause.

Marsha Rydberg and countless others offered legal aid to help us get the project through permitting, and retired Dental Tech, Randy Talaski, along with his friends, faithfully installed all of the dental equipment. Everything came down to the wire—even the final approval from the county came just hours before our anticipated opening on October 6th.

It had been a difficult week, like a marathon runner on the last miles of the race. Slightly sleep deprived, and anxious, I arrived at the mission at 6:30am to find a dozen people waiting in the dark for the clinic to open. It was one of the most beautiful sights a heart could hold. Some of those waiting had been there since 5:00am.



On this first day, Dr.'s Dan Branca and Greg Jacobs treated 13 patients and performed 16 procedures. Angela Zane, was voted MVP for her tireless efforts on both the panoramic and traditional digital x-ray devices. Everyone involved worked tirelessly to do the best we

could for our patients. On November 3rd the mission will hold a formal dedication of the clinic followed by an open house. It is a wonderful opportunity for you to see all the ways the mission works to support farmworkers and our neighbors in need.

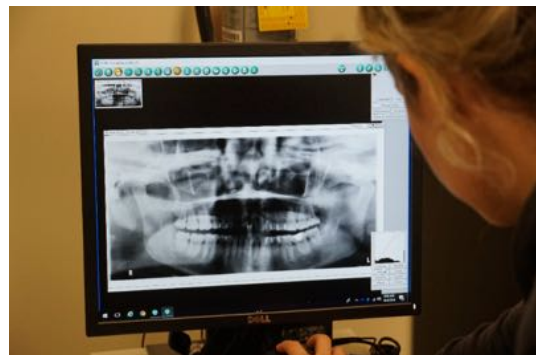
We continue to pray that we will be able to open the clinic more than once a month, but much depends on the professionals who are willing to volunteer their time. We also pray that we can expand dental services to include cleanings, and eventually fillings but both of those procedures require instruments we can't afford right now. We also continue to talk with medical and legal professionals about adding their services to our campus, but as I am reminded time and time again—we make our plan, but it is God that determines the course.



Dios le bendiga!

Kathy

Rev. Kathleen (Kathy) Dain
Executive Director





The Beth-El Farmworker Ministry wishes to thank all those who participated in the development of the Beth-El Dental Clinic.

Thanks to the generosity of an anonymous donor and countless individuals and congregations, the clinic was opened at a minimal cost to the mission.

The mission wishes to especially thank the following individuals:

Mark Orendorf and Cedarkirk *Challenge to Change*

Michael Frandsen and Interstruct Inc.

CH & F Construction Services LLC

ESG - Electrical Solutions Group

J & S Plumbing

McMullen Air Conditioning

Marcos Custom Cabinetry

Precision Painting Group

Prodigy Flooring

Steel Heart Machine & Fab. Inc.

Marsha Rydberg

Randy Talaski

Bob O' Neil

Richard McBride

Roland Rojas

Kim Gibson

Irene Stenzler

Dick Bouty

Pat Tarrant

Members of FPC Tampa #RadicalHospitality

Henry Schein

Dr. Dan Branca

Dr. Greg Jacobs

Angela Zane

Carmen Felts

Sister Sara Proctor

Angie Hlavaty

Teresa Posada-Wilcher

Emma Donofry

Mónica Ruíz

Carmen Ruíz

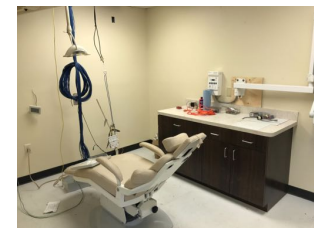
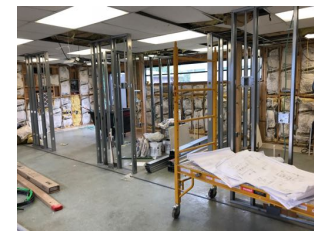
Sandra Guevara

Sandra McCaw

Ashley Evangelista

Angel Posada-Wilcher

Nydia Lugo



Verónica Castro
Lizseth Gallardo
Silvia González
Dr. David Sweeney
Cathy McBride
Dr. Georgia W. Castro
Dr. Garth McCaffrey



Join Us for The Blessing of the Beth-El Dental Clinic

Saturday, November 3, 2018

11am to 2pm

Open House
Community and Campus Tours

Here is your opportunity to see all that Beth-El does to support farmworkers and our neighbors in need through opportunities for Hunger Relief, Education, Health Care, and Spiritual Development



***God is with us on our
Journeys***



We have been studying the book of Exodus to learn more about how God sent Moses to lead the people of God out of suffering and slavery in Egypt. Together, we are reflecting upon how God was with the Israelites and is with us during the ups and downs of our lives. In God's grace, God offers words of hope as God frees us from sin and from all that would prevent us from living into the future God has planned for us. Recently, I shared that when God brings the Israelites out of slavery in Egypt,

God is both freeing God's people from the suffering of the past and freeing them toward a new future, a new way. We are praying to discern God's plans for us here at Nuevo Camino which literally means "new way" or "new path."



As we move into the Fall program year I am happy to share that we are busy registering families for the Adopt-a-Family Program for Christmas. This month we plan to formally begin our Youth Group and Sunday school for children. Our efforts at recruiting nursery volunteers and Sunday school teachers have been successful and

10 people will be trained to lead our programming as teachers, substitute teachers and helpers.

I cannot help but to praise God and to give thanks as I reflect upon my faith journey with the Nuevo Camino worshipping community as I mark one year anniversary of ministry with my brothers and sisters in faith. Please continue to hold all of us in prayer as we seek out God's "*nuevo camino*" for us.

Peace and Blessings,

A handwritten signature in blue ink, which appears to read "Tamara Lara". The signature is fluid and cursive.

Rev. Tamara Leonard Lara
Pastor, Nuevo Camino at Beth-EI



47 members from Nuevo Camino traveled to Sarasota to worship at First Presbyterian Church for World Communion. Many thanks to all at FPC Sarasota for their hospitality.

I would like to become more involved at Beth-El Mission as a Volunteer:

- Lunch at the Farm (Sept-May)
- Food Pantry
- Lead VBS
- Organize a Workgroup
- Organize a Food Drive
- Organize a Clothing Drive

I would like to donate \$ _____

- Summer Camp Scholarships
- Back to School Program
- VBS Supplies
- College Scholarships
- Music Lessons for Youth
- Food Pantry
- Mission's Greatest Need

Reflections on My Years at Beth-El



In 1976, the Lord presented our church with the idea of opening a work among the migrant farm workers in and around the Ruskin area of Florida. Sid and I were asked by Dr. Baker to go to worship services on Sunday afternoons to add support from Lewis Memorial Cumberland Presbyterian Church as the group was forming and getting off the ground. The services were in carpools and were conducted in Spanish, of course, so our communication was limited to our high school language class Spanish, but we knew many of the songs and sang them in English as best we could. We read the Bible texts out of our English Bibles and so managed to follow what was being preached and studied. Some of the people spoke some English and some of the younger ones were completely bi-lingual. These were enjoyable times as the Holy Spirit was present.

When we got the house on 14th Street, we painted, cleaned, renovated and repaired until it was a good place for worship and Christian Education classes. Early on, we had Vacation Bible Schools, taught Sunday School classes and prepared fellowship meals along with the migrant workers who attended. Joyce Lovelace and I did lots of Bible study and craft projects and played games with the children who came. There were usually lots of people at the worship and lots of children at VBS. Most of the activities were held outside under the trees but it was fun and we were all used to the hot Florida weather.

There were some years when Sid was on the Steering Committee and was much more involved directly with the people than I was. I was not so “on hands” but always collected clothing, food and money for the ongoing of the mission and attended special times and represented the CPC at many meetings. In the past 10 years, I have been on the Board of Directors and have seen first hand the wonderful ministry in action and have experienced interaction with the ones being served and the ones

who serve at Beth-El. There have been some extremely challenging times in these last 42 years but I always believe it is the Lord's work, put here for His purpose and sustained by His almighty hands.

The mission has been fortunate in having the great leadership it has had over the years and the many wonderful people who have volunteered and helped in so many ways. I have been greatly blessed in my Christian life and am deeply thankful for being allowed to be a small part in this ministry.

Lita Claytor Swindle
Board Member

Immediate Needs

Beth-El Farmworker Ministry has an immediate need for the following

items:

- **Mash potatoes**
- **Turkey gravy**
- **Green beans (canned)**
- **Pumpkin pies**
- **Corn (canned)**
- **Turkeys**
- **Canned fruits and vegetables**
- **T-shirts/undershirts (S,M,L)**
- **Sneakers Shoes 6-10 men/ 5-11 women**
- **Men's pants**
- **Sunblock (sample size)**
- **Men's belts Size (28-36)**



Volunteer Opportunities



Many thanks to the volunteers from FPC Tampa who chose Beth-El as one of their mission sites for Serve Day Tampa Bay. #Radicalhospitality

Beth-El has a number of opportunities for volunteers who would like to share their professional skills to help improve the quality of life of our farm working families, including:

- **Mentors** - For career coaching and job interview training.
- **Teachers** - Bi-lingual who can help with basic skills (ESOL, GED).
- **Dentists/Hygenists** - to add to our volunteers for our clinic.
- **Translators** - to work with professional dental teams.
- **Counselors** - (bi-lingual) to help with needs assessments.

Beth-El

Farmworker Ministry, Inc.

OCTOBER 2018



SUN	MON	TUE	WED	THUR	FRI	SAT
01	02 ★ Sorting & Packing for Farm Deliveries	03 Food Pantry Distribution Day	04 Groceries packing day	05 ★ Sorting & Packing for Farm Deliveries	06 Mobile Food Pantry	07 Dental Clinic
08 Worship Service 11 am	09 Rice & Beans packing day!	10 Food Pantry Distribution Day	11 ★ Sorting Clothing	12 Groceries packing day	13 ★ Sorting & Packing for Farm Deliveries	
14 Worship Service 11 am	15 ★ Sorting Clothing	16 Food Pantry Distribution Day	17 Groceries packing day	18 ★ Sorting & Packing for Farm Deliveries	19 ★ Sorting Clothing	20
21 Worship Service 11 am	22 Rice & Beans packing day!	23 Food Pantry Distribution Day	24 ★ Sorting Clothing	25 Groceries packing day	26 ★ Sorting & Packing for Farm Deliveries	27
28 Worship Service 11 am	29 ★ Groceries packing day	30 Food Pantry Distribution Day	31 Groceries packing day	01 ★ Sorting & Packing for Farm Deliveries	02 ★ Sorting Clothing	03
04	05	06	07	08	09	10

For farm deliveries or lunch at the farm times, please contact Janet at janet@beth-el.org (813) 633-2546 ext. 228 for more details. ★Subject to change.



Many thanks to all our supporters!

Leave a Lasting Legacy



Consider making Beth-El Farmworker Ministry part of your will or living trust. Your gift will help the farm working community for generations to come.

Support Beth-El Mission with your online contribution today.



A Printable Copy of this Newsletter is Available on our

Website at: www.beth-el.org or by emailing us at:

info@beth-el.org

Beth-El
Farmworker Ministry, Inc.

Fueled by Volunteers and Your Faithful Prayers and Support

Our mailing address is:

18240 Highway 301 South

PO Box 860

Wimauma, FL 33598-0860

Phone: 813-633-1548

Email: info@beth-el.org

Web: www.beth-el.org

Beth-El Farmworker Ministry is open Monday through Thursday from 8a.m. to 5p.m., Friday 8a.m. to 2p.m. Other times by appointment.

Beth-El Farmworker Ministry Staff

Rev. Kathleen (Kathy) Dain, Executive Director	ext. 223	email: kathy@beth-el.org
Rev. Tamara Leonard Lara, Pastor	ext. 222	email: tamara@beth-el.org
Roberto Villadoniga, Property Administrator	ext. 224	email: roberto@beth-el.org
Javier Izaguirre, Community Outreach Mgr.	ext. 228	email: javier@beth-el.org
Rosalva Serrano, Exec. Admin. Assistant	ext. 231	email: rosalva@beth-el.org
Sheila Villamar, Operations Assistant	ext. 227	email: sheila@beth-el.org

Extraordinary Support Staff:

Maria Galarza

Jesus Gallardo



Share



Tweet



Forward